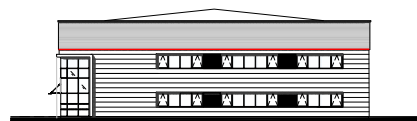
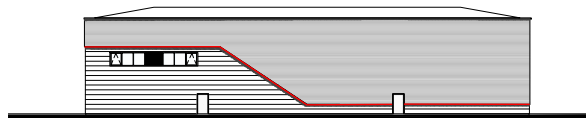


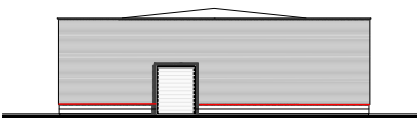
EAST ELEVATION



NORTH ELEVATION



WEST ELEVATION



SOUTH ELEVATION

CONSTANT CURRENT <3SDCM LED STRIP SERIES

50M DC48V
Constant Current
SMD 2835 LED

Shown left: A typical industrial unit 40M long x 28M wide. Outlined in red is the Cortex Lighting 50M 48V constant current 'current limiting' LED tape, shown installed into the rebated underside of the cill flashing (see below right).

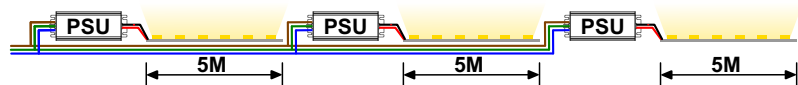
Only 2 x 300W 48V power supplies are required. Total power = 558W

- Minimal installation points to wire, saving time and cost
- High density of LED's/M ensures an unbroken line of light
- Constant Current SMD's ensure an even illumination along the entire length
- IP ratings of IP20 for indoors or IP65 for exterior applications
- Adhesive backed heavy copper PCB
- Various aluminium profile channels available and in various lengths
- Channels supplied complete with stainless steel mounting clips
- Opal, frosted or clear UV stabilised polycarbonate diffusers
- IP65 48V surface mounted power supplies (40W to 600W)
- Power supplies available in various dimming options
- LED tape guaranteed for 5 years and power supplies for 7 years

The 'Short' Problem and the 'Long' Solution

PROBLEM - 12V Power Supplies and Constant Voltage LED Strips

5M maximum run length and then a noticeable drop in brightness can be seen. This method requires additional cabling resulting in a costly and expensive installation.



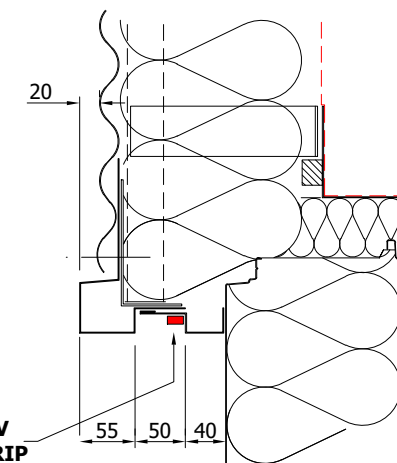
PROBLEM - 24V Power Supplies and Constant Voltage LED Strips

20M maximum run length but a noticeable drop in brightness will be seen. To overcome the lumen reduction, over the run length, an additional power supply could be connected at the opposite end or additional 24V cables could be connected.



SOLUTION - 48V Power Supplies and Constant Current LED Strips

50M maximum run length with **no** noticeable drop in brightness from beginning to end. This method requires **no** additional cabling resulting in a more cost effective installation.



Typical Installation

Part No.	Watts/M	Length	LED Qty	Lumens/M	Cutting Length
CL02-0001/12.8/..	12.8 W/M	10M run	150 LED's/M	1,485 lm/M	Cut every 100mm
CL02-0002/12.8/..	12.8 W/M	20M run	140 LED's/M	1,382 lm/M	Cut every 100mm
CL02-0003/12.8/..	12.8 W/M	30M run	130 LED's/M	1,280 lm/M	Cut every 100mm
CL02-0004/5.8/..	5.8 W/M	40M run	130 LED's/M	601 lm/M	Cut every 100mm
CL02-0005/4.1/..	4.1 W/M	50M run	130 LED's/M	414 lm/M	Cut every 100mm